



From the Principal...

Our annual ASD Food Drive this year will be March 11-22.

1. We will be competing BY GRADE LEVEL this year instead of individual classrooms, but remember it is going to take EVERY classroom to help their grade level!
2. I will collect the food and money by class each day but totals will be by grade level. The TOP GRADE LEVEL will win the party this year.
3. Start planning now to help your team (and more importantly the FOOD BANK) win!



More information will be coming out soon.

Colleen Barlow

Next Week at Lakeland Hills:

NO SCHOOL: MID-WINTER BREAK IS FEB. 18 (PRESIDENTS' DAY) through FEB. 22

Coming Up...

- School resumes on Feb. 25 - PLC Late Start (9:40am) In Building Global Reading 12:30-1:30 (Library)
- Musical practice runs after school Feb. 25 - April 22 (see musical webpage for particulars)
- Dorian Spring personality photos on Feb. 27
- PTA Popcorn on March 1
- Read Around the World event March 1
- Watch for Father/Daughter Dance re-schedule date



The large amount of snow and thick ice on the school property has required some extra skills these past 2 weeks. We had to be flexible with schedules and cancelled events and do all the necessary work in three days rather than five. Today we reached the point where clearing the playground was possible. Our Principals and Custodian were joined on the playground by parents, Julius Giron and Ross McGrath, and together they made a big dent in snow removal. We will have the students out for recesses today! Thank you also to parent, Grant Bonham, for helping to clear crosswalks and ensure safe walking!



Jan. 28 - Feb. 1 Weekly Attendance Report:

- Mrs. McKeough's kindergarten class had PERFECT (no absences, no tardies/early dismissals) daily attendance at **100%** and **earned the Attendance Cup**. **Congratulations to these Kindergarteners!** **2nd Grade** as a whole had the highest average daily attendance rate at **96.50%**. **2nd Graders, you are doing incredible at being at school!**

Feb. 6-8 Weekly Attendance Report:

- Mrs. Bonham's Kindergarten class had the highest daily attendance rate at 100%. **Fantastic effort during a snowy week!!** **4th Grade** as a whole had the highest average daily attendance rate at **96.79%**. **4th Graders, thanks for your outstanding efforts to make it to school during a snowy week!**

Of the whole student body (702) **448 students had perfect attendance from Jan. 28 - Feb. 8**. That means they were here on time and stayed for the whole day for all of these days!!



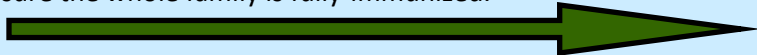
Message from Vicki Wagner MSN, RN School Nurse...

Measles Information

As you may be aware, Auburn/Covington had a confirmed case of measles in an adult. The registered school nurses are working hard to inform families of students at risk of developing measles.

Students who cannot verify immunity may be excluded from school if we have a confirmed measles case. At this time, there are no confirmed or suspected cases in the ASD. Please become familiar with measles symptoms and contact your child's health care provider immediately with any concerns.

We encourage all community members to check their immunization records and make sure the whole family is fully-immunized.



Hello Parents!! Dr. Seuss Read Round the World is coming and it is a wonderful way to share about and honor various cultures around the world. Better yet, we can honor the cultures that are represented right here in our own school. If you would love to travel to other countries but do not have the time or money, Lakeland Hills is the place to be on **March 1, 2019**.

BUT WE NEED YOU. We need speakers or people interested in sharing their passion, interest or tie to a particular country with others. **(Possible idea: posters, clothing, books, dancing, music, crafts, food, drinks or anything that describes the country.)**

This is a great way for you and your child/children to participate together in a wonderful all school event.

If you are not sure what to do or how to get started, we still have plenty of time! Stop by before or after school with your child and see us or contact me at vleaf@auburn.wednet.edu or 253-876-7711 ext. 1240. You may also contact Mrs. Morford, ELL Instructional Specialist, at tmorford@auburn.wednet.edu or 253-876-7711 ext. 9040

We hope each of you will consider participating. This is a great family event and being able to share about your culture or exploring a different culture is so much fun!!

Sincerely,

Mrs. Vickie Leaf
Librarian/Teacher
Lakeland Hills Elementary
vleaf@auburn.wednet.edu



Measles

IT ISN'T JUST A LITTLE RASH



Measles can be dangerous, especially for babies and young children.

MEASLES SYMPTOMS TYPICALLY INCLUDE

- High fever (may spike to more than 104° F)
- Cough
- Runny nose
- Red, watery eyes
- Rash breaks out 3-5 days after symptoms begin



Measles Can Be Serious



About 1 out of 4 people who get measles will be hospitalized.

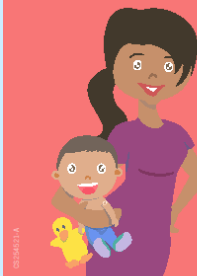


1 out of every 1,000 people with measles will develop brain swelling due to infection (encephalitis), which may lead to brain damage.



1 or 2 out of 1,000 people with measles will die, even with the best care.

You have the power to protect your child.



Provide your children with safe and long-lasting protection against measles by making sure they get the measles-mumps-rubella (MMR) vaccine according to CDC's recommended immunization schedule.

WWW.CDC.GOV/MEASLES



American Academy of Pediatrics
DEDICATED TO THE HEALTH OF ALL CHILDREN™



AMERICAN ACADEMY OF FAMILY PHYSICIANS
STRONG MEDICINE FOR AMERICA